

News Release

August 28, 2019

Dogenzaka 1-chome Shibuya Station Front Redevelopment Association
Tokyu Land Corporation

Determination of Details of Facilities Inside SHIBUYA FUKURAS, a New Landmark at West Exit of Shibuya Station

- Decision to name tourism information center “shibuya-san”
- Decision to offer limousine bus services from Haneda Airport and Narita Airport at first-floor bus terminal
- Business-Airport SHIBUYA FUKURAS to open on December 9, as support facility for foreign companies entering into the Japanese market

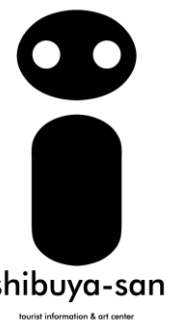
Dogenzaka 1-chome Shibuya Station Front Redevelopment Association and Tokyu Land Corporation (Head office: Shibuya-ku, Tokyo; President: Yuji Okuma), which is both a partner and a participating member of the association, are working together on a project for the opening of SHIBUYA FUKURAS (hereafter the “Building”) and announce that details of the various facilities to be newly established within the Building have now been determined.

The Building is being built as part of the surrounding redevelopment area which includes the former Tokyu Plaza Shibuya. It is made up of office space, a shopping complex, a tourist information center, a bus terminal and a support facility for foreign companies entering into the Japanese market, and the street-level stores in the shopping zone will open in phases from November and the newly transformed Tokyu Plaza Shibuya is scheduled to open in December.

■ Decision to name the tourist information center “shibuya-san”

A decision has been made to call the tourist information center on the first floor of the Building “shibuya-san.” This name is made up of “shibuya” and the honorific title “san” meaning “Mr,” “Mrs” or “Miss” and conveys the desire to be addressed in a friendly manner by foreigners visiting Shibuya for the first time. The logo is based on the “i” symbol, which is used to represent an information center, and human traits have been attributed to this “i.”

Besides fulfilling the usual tourist information and luggage storage functions, shibuya-san will create opportunities for experiences and interactions which make tourists feel a deep connection with the local people and give them a sense of belonging to Shibuya through art events, etc. The center is scheduled to open in December 2019.



shibuya-san logo

[Overview of facility]

Name of facility: shibuya-san tourist information & art center

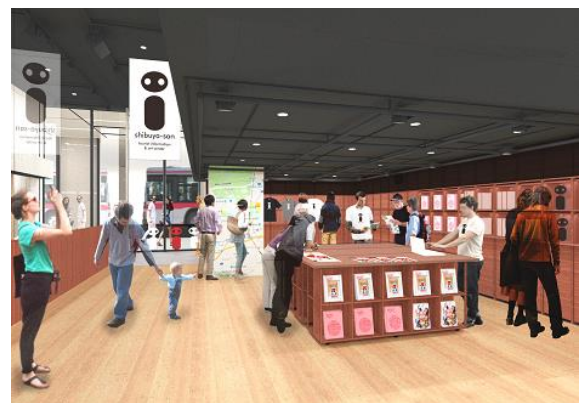
Business entity: Tokyu Land Corporation

Operating company: JTB Communication Design, Inc.

Services: Tourist information, luggage storage and delivery,
airport limousine bus ticket sales and waiting area,
currency exchange, programs for experiencing Shibuya,
provision of drinks, art center, staging of events

Opening hours: 10:00 - 23:00 *Excludes some services

Opening date: December 2019 (plan)



shibuya-san (conceptual drawing)

■ Provision of limousine bus services from Haneda Airport and Narita Airport at bus terminal on first floor of SHIBUYA FUKURAS

The first-floor business terminal will offer limousine bus services from Haneda Airport and Narita Airport in addition to local bus services. Buses will arrive at and depart from directly in front of shibuya-san and SHIBUYA FUKURAS will serve as a gateway for tourists from other parts of Japan and overseas visiting Shibuya. The services are scheduled to start in early December.

Name of route	Number of services (Total for both directions)	Service operators
Shibuya-Haneda Airport	31	Tokyu Transses Corporation Keihin Kyuko Bus Co., Ltd. Airport Transport Service Co., Ltd.
Futako-Tamagawa/Shibuya - Narita Airport	29	Tokyu Bus Corporation Airport Transport Service Co., Ltd.

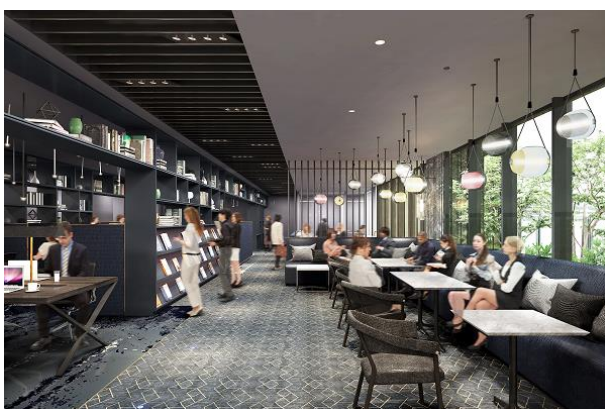


Bus terminal (conceptual drawing)

■ Opening of Business-Airport SHIBUYA FUKURAS as support facility for foreign companies entering into the Japanese market

Business-Airport SHIBUYA FUKURAS will open on December 9 (Mon) on the seventeenth floor, as a support facility for creative content industries and foreign companies entering into the Japanese market. This will be the tenth members-only satellite office operated by Tokyu Land Corporation in Tokyo.

With its extremely convenient location right in front of Shibuya Station, which is a terminal station, Business-Airport SHIBUYA FUKURAS has a higher shared workplace (lounge) area ratio compared to the other satellite offices and can be used by large numbers of people to make effective use of their time in between traveling for work, meetings or relaxation. Up on the seventeenth floor, with good views of the city, Business-Airport SHIBUYA FUKURAS has its own outdoor terrace where members can feel close to greenery and the fresh air, boosting their productivity. Since SHIBUYA FUKURAS has a bus terminal offering airport limousine bus services on the first floor, Business-Airport SHIBUYA FUKURAS also provides shower cubicles in anticipation of use by a global clientele, ensuring that users are always comfortable, whether working or taking a break.



Shared workplace (conceptual drawing)



Entrance/Reception (conceptual drawing)

[Overview of facility]

Name of facility: Business-Airport SHIBUYA FUKURAS
 Business entity: Life & Work Design Co., Ltd.
 Products provided: 16 serviced offices, shared workplace, meeting rooms, shower cubicles, etc.
 Opening hours: Weekdays 8:00 - 21:00, Sundays and holidays 10:00 - 18:00
 Days closed: Saturdays, year-end and New Year holidays, other days designed by SHIBUYA FUKURAS
 Opening: December 9, 2019 (plan)
 Monthly membership fees (excl. tax):
 <Shared workplace members>
 Private members: 9,000 yen
 Master members: 30,000 yen
 Address members: 60,000 yen
 <Serviced office members> From 160,000 yen

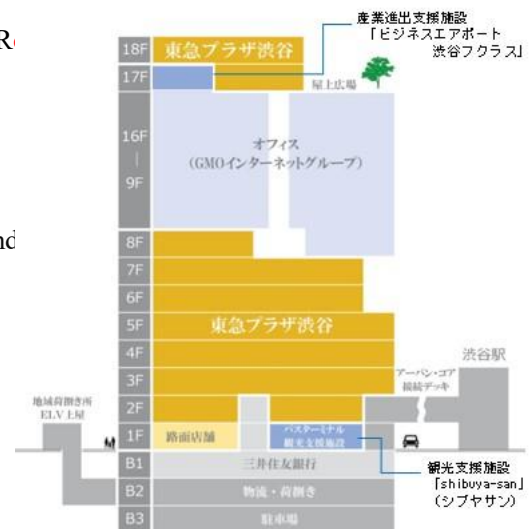
By also providing these functions, SHIBUYA FUKURAS will increase the international competitiveness of the area surrounding Shibuya Station. Some of the streets around the Building will also be redeveloped as relaxing spaces where all visitors can feel at ease. In addition, the second basement level of the Building will have a community cargo handling facility which businesses delivering to the local shopping streets can use, making the area safer, more comfortable and easier to navigate for visitors and creating bustle in the local shopping streets around the Building.



Through such initiatives, SHIBUYA FUKURAS will serve as a new gateway at the west exit of Shibuya Station for the many generations and inbound tourists who visit Shibuya and, with the help of the local community, will create a bustling city, enabling further enhancement of Shibuya’s appeal, which lies in its diversity.

■ Overview of SHIBUYA FUKURAS

Outline of entire project Dogenzaka 1-chome Shibuya Station Front R
 Location 1-38 Dogenzaka, Shibuya-ku, Tokyo
 Uses Retail and office space, parking, etc.
 Site area Approx. 3,356 m²
 Total floor area Approx. 58,970 m²
 Number of stories 4 floors below ground and 18 floors above ground
 (19 floors under Building Standards Act)
 Height Approx. 103 m
 Design Design architect: Tezuka Architects
 Master architect: Nikken Sekkei Ltd.
 Design supervision Shimizu Corporation
 (First-class registered architect office)
 Construction Shimizu Corporation
 Completion October 2019 (Plan)
 Opening In phases from November 2019 (plan)





*Please also refer to the news release giving details about “Shibuya-san tourist information & art center” issued by Tokyu Land Corporation on the same date.