

December 3, 2024

TOKYU LAND CORPORATION
Scrum Studio Inc.

Launch of “SAKURA DEEPTech SHIBUYA”, a community platform that supports the growth of deeptech startups through collaboration between industry, government, and academia in Japan and abroad

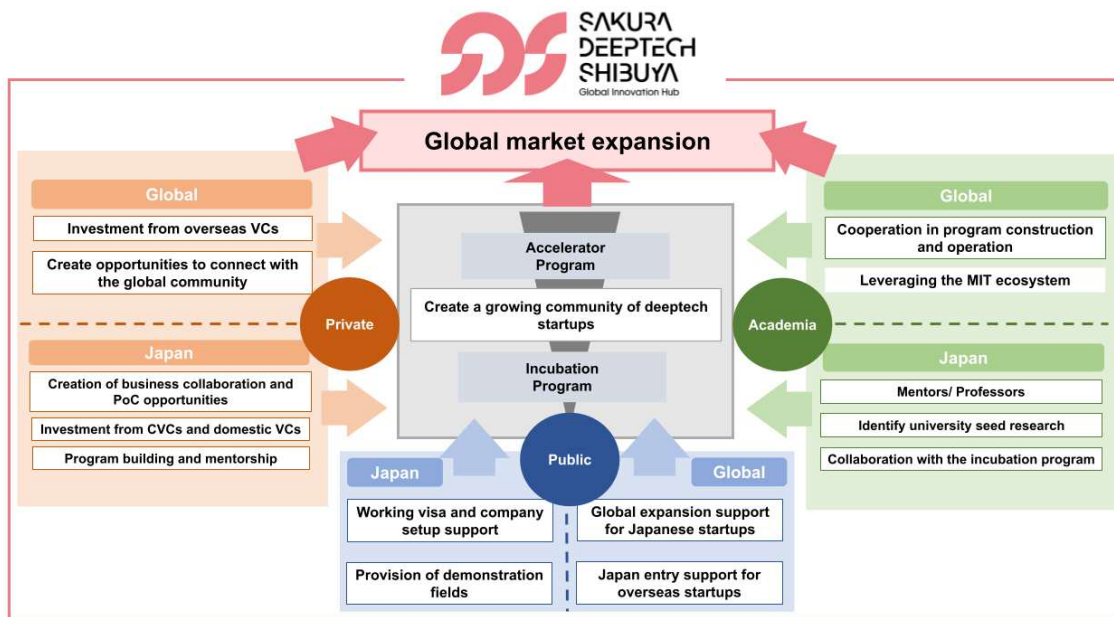
Official opening on January 23, 2025, at Shibuya Sakura Stage

Tokyo, November 29th, 2024- TOKYU LAND CORPORATION (hereinafter referred to as “TLC”) is pleased to announce the opening of SAKURA DEEPTech SHIBUYA (hereinafter referred to as “SDS”) on January 23, 2025, one of the largest community platforms in Shibuya, to foster and support startups in the deeptech field.

Within the community, the “Sakura Deeptech Accelerator,” (hereinafter referred to as “Accelerator”) operated by Scrum Studio Inc., will launch as a global accelerator program to support deeptech startups with top-tier partners such as professors from Massachusetts Institute of Technology (hereinafter referred to as “MIT”) *, UTokyo IPC, and Shibuya City Office in SDS.

The teaser website will be made public, and startups can apply to the accelerator program through the website. In addition, registration for the launch event “DEEPTech INNOVATORS DAY 2025” will open.

*Note: Signed an individual contract with professors at MIT for advice and general supervision.



■Mission of SAKURA DEEPTech SHIBUYA:

“SAKURA DEEPTech SHIBUYA” aims to encompass a global deeptech startup community.

The initiative complements TLC’s ongoing initiatives to enhance the value around the Greater Shibuya area* to support the creation of new industries by providing a place for startups to grow, supporting their growth through funding support, and creating opportunities for collaboration with various players in industry, government, and academia.



Deeptech, including areas such as energy, AI, robotics, climate tech, and biotech, are all advanced technological fields with the potential to have a major impact on society. Government agencies, including the Ministry of Economy, Trade and Industry (METI), are providing significant support for R&D and technology implementation, as well as funds for this purpose. On the other hand, deeptech startups face unique risks due to high capital demands and lengthy commercialization timeline.

SDS aims to build a global innovation ecosystem in the Greater Shibuya area by providing support through an accelerator program for the growth of deeptech startups, taking full advantage of Japan's strengths in research and technology.

*Note: the Greater Shibuya Area covers an area within a 2.5 km radius from Shibuya Station, as defined in the Tokyu Group's Shibuya urban development strategy.

Website: <https://www.sakuradeeptechshibuya.com/>

■Features of SAKURA DEEPTech SHIBUYA:

SDS empowers deeptech startups with robust support through domestic and international industry-academia-government collaboration. Highlights include partnerships with professors from MIT via the MIT Industry Liaison Program, and an accelerator program operated by Scrum Ventures and Scrum Studio. SDS will also feature a vibrant learning community fostering communication among global startups and top-tier corporations.

■Facility Overview:

Name: SAKURA DEEPTech SHIBUYA -Global Innovation Hub-

Location: Shibuya Sakura Stage, Central Building, 12th floor (Location: 1-2 Sakuragaoka-cho, Shibuya-ku, Tokyo)

Opening date: January 23, 2025

Areas: Energy, Fuels, Materials, Chemicals, AI, Robotics, others

Floor space: 778 m²

Main features:

- Japan's largest deeptech startup ecosystems
- Accelerator program advised by professors from MIT
- Support through industry-government-academia collaboration in Japan and abroad

- Business co-creation with large corporates and investment opportunities from VCs
- Support for overseas startups to expand into Japan and Asia, and support for Japanese startups to expand overseas, etc.

To commemorate the opening of SDS, a global conference will be held on January 23, 2025, inviting key players in deeptech from various fields to provide insight into the future of the deeptech domain.

Registration: <https://deeptech-innovators-day-2025.peatix.com>

■ Overview of Facility

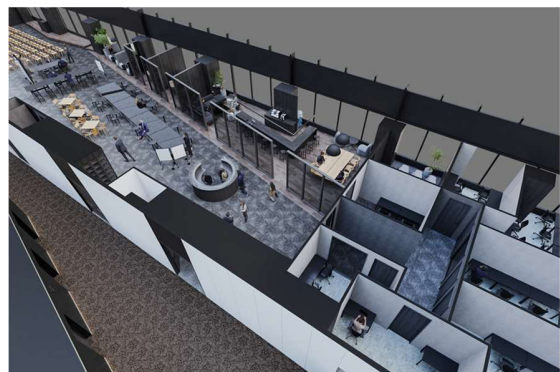
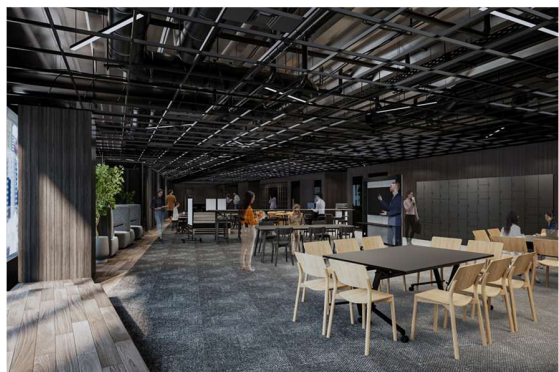
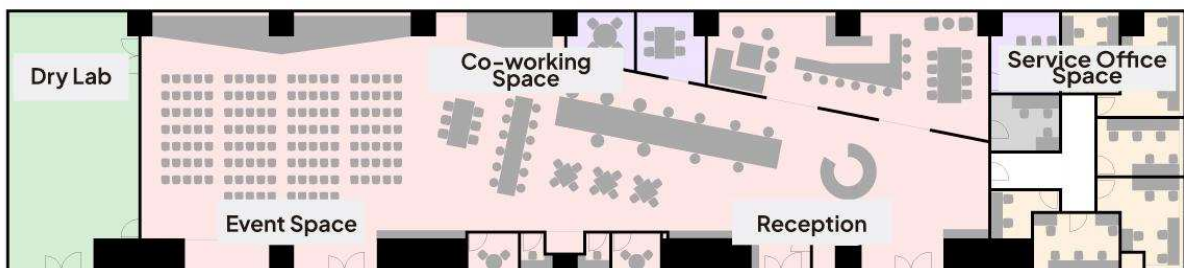


Image of "SAKURA DEEPTECH SHIBUYA"

■ Introduction of Sakura Deeptech Accelerator:

Sakura Deeptech Accelerator is a global accelerator program that supports deeptech startups with world-class partners. The Four Pillars of the program are "Global," "Top-Tier Deeptech Mentorship Circle," "Shibuya Culture," and a "Leading Corporate Community."

The accelerator will be managed by Scrum Studio, which has a proven track record of startup investment and open innovation in the deeptech domain such as climate tech, AI and robotics, connecting startups with Japanese corporations. The accelerator will provide a one-on-one mentorship program for startups and a curriculum for corporate partners to obtain the necessary skills and knowledge required for startup co-creation.

Value Proposition of the Accelerator Program for Startups:

1. Build partnerships with large corporations, academia, and government institutions
2. Comprehensive support to prepare startups for fundraising from Japanese investors and corporates
3. Obtain strategic branding support in the deeptech sector
4. Use of facilities (co-working space, dry lab, wet lab) for R&D and business ideation

Accelerator Program Startup Applications are Now Open

Global deeptech startups are invited to join our accelerator program. Please visit the teaser website for further details and entry requirements.

- Stage: Early-growth stage startups (startups that have reached PMF*)
- Geography: Global (Japan and Overseas)
- Target areas: "Climate Tech" and "AI & Robotics"
- Deadline: January 31, 2025. Whilst spots cannot be guaranteed, late submissions will be considered on a case by case basis

Application Form: <https://forms.office.com/e/GBJSgPmW2z>

*Product market fit = state in which a product that is offered addresses a customer issue and is accepted by the appropriate market.

■ Learning & Community:

In addition to the accelerator, SDS is home to a community for innovation, driving the global expansion of Japanese startups and facilitating foreign startups' entry into Japan and Asia.

Key features of the Learning and Community:

1. Expert-led study sessions to deepen specialized deeptech topics with global experts
2. Weekly lectures on global deeptech investment trends from VCs and startups based in the U.S., Asia, Europe and the Middle East
3. Matching events among post-doctorates, students, and companies to identify future talent
4. Networking events for selected startups of the accelerator and related deeptech stakeholders

■Partners:

MIT Industrial Liaison Program, Hello Tomorrow Japan, Brinc Japan Ltd., Apprecia Capital, UTokyo Innovation Platform Co., Ltd. Kyushu University Open Innovation Platform Co., Ltd., Okinawa Institute of Science and Technology, Beyond Next Ventures Inc., Japan External Trade Organization, Tokyo Innovation Base, Shibuya City Office ...and more



*as of November 29th

■Partner Collaboration:

“NEXT PRIME FOOD” is an entity that aims to support the collaboration of large corporations and startups in the agritech/foodtech area, operated by Beyond Next Ventures, Inc, UnlocX Corporation, Mitsubishi UFJ Bank, Ltd. and an advertising agency. They will utilize SDS from fiscal year 2025 onward and will aim to create startups in the agritech and foodtech field.



■Company Overview

TOKYU LAND CORPORATION

Address: SHIBUYA SOLASTA, 1-21-1 Dogenzaka, Shibuya-ku, Tokyo

CEO: Hiroaki Hoshino

Year of Establishment: 1953

Website: <https://www.tokyu-land.co.jp/english/>

Scrum Studio Inc.

Address: 1-1-1 Nishishimbashi, Minato-ku, Tokyo

President: Masami Takahashi

Year of Establishment: 2020

Website: <https://scrum.vc/studio/>

Inquiries related to the Program:

Email: sda_shibuya@scrum.vc