

---

***TOKYU LAND CORPORATION  
COMPANY PROFILE 2026***

Established: December 17, 1953

Headquarters: SHIBUYA SOLASTA, 1-21-1 Dogenzaka, Shibuya-ku, Tokyo

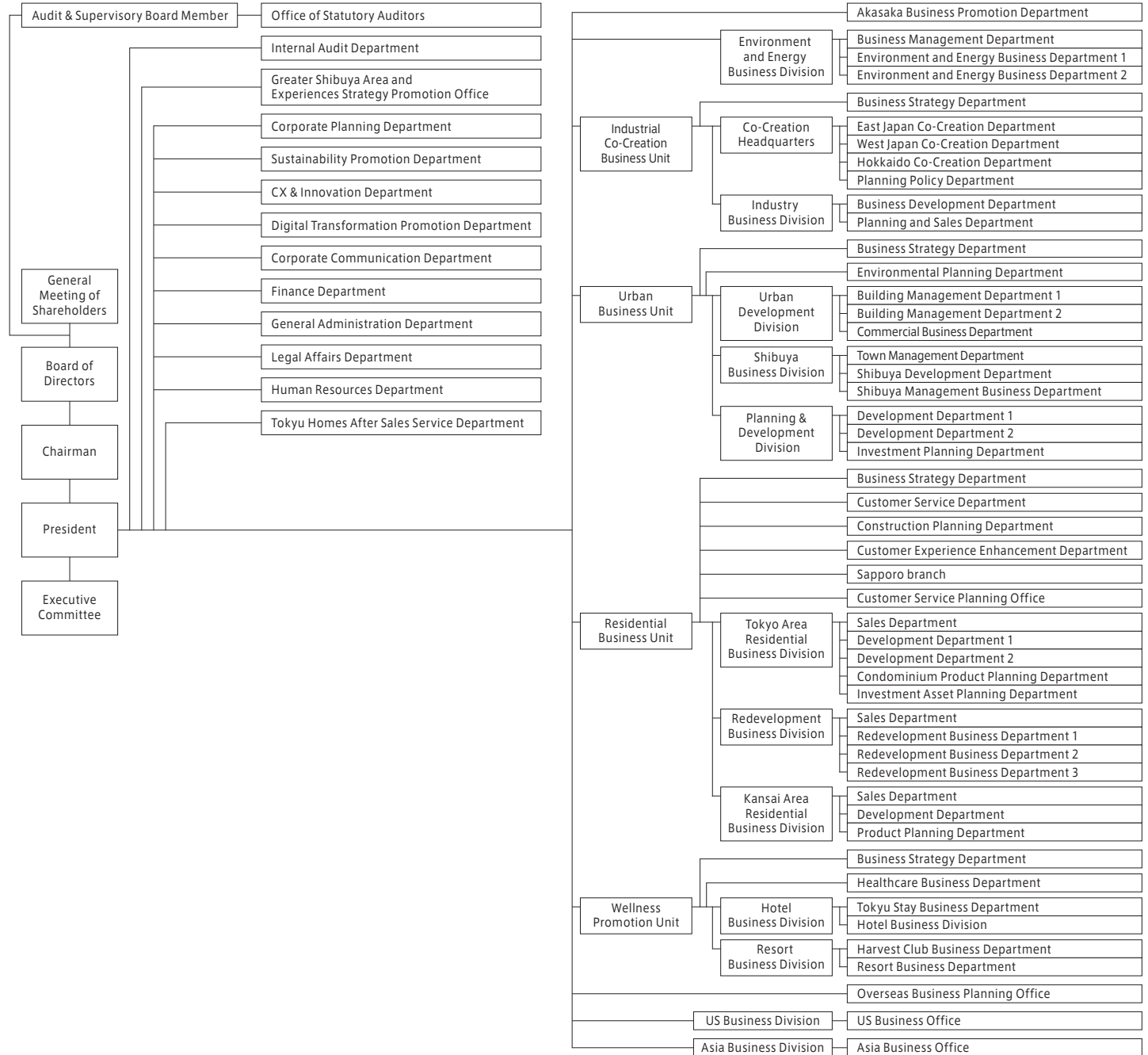
Capital: ¥57,551,699,228 (as of March 31, 2025)

Employees: 1,281 (as of April 1, 2026)

Executive Board

As of April 1, 2026

Chairman	Hiroaki Hoshino
President & CEO	Tatsuaki Tanaka
Director & Senior Managing Executive Officer	Shinichiro Usugi
Director & Managing Officer	Shinya Tange
Director & Managing Officer	Keisuke Nishida
Director & Operating Officer	Hidetatsu Ikeda
Director & Operating Officer	Shigeru Hashimoto
Director & Operating Officer	Haruo Yamagata
Director	Hironori Nishikawa
Outside Director	Shirou Wakui
Outside Director	Jiro Araumi
Outside Director	Motoyuki Ii
Outside Director	Takuya Kurita
Senior Corporate Officer	Shuichi Noma Yasuhiro Samejima
Operating Officer	Yasuhiro Kurokawa Eiji Yamane Takahiro Aoki Kimitoshi Satoh Minoru Hirachi Morio Suzuki Yumi Nakano Shusaku Taido Shiho Nakagami Kenya Itoh Takashi Sakamoto Hironori Ozawa Hirokazu Iritani Taro Yamashita
President of Major Affiliated Companies (Equivalent to Operating Officer)	Tsuyoshi Tsuneyoshi (Tokyu Land Capital Management Inc.) Akira Kubo (TLC REIT Management Inc.)
Full-time Audit & Supervisory Board Member	Masaoki Kanematsu Akiko Enokido



1918	- Established the Den-en Toshi Company and commenced the sale of the Senzoku residential district and the Tamagawadai residential district (now Den-en-chofu) in 1923 based on Japan's first garden city plan.	1983	- TLC headquarters moved to the Shin-nanpeidai Tokyu Building.	2010	- Totsuka Tokyu Plaza (now Tokyu Plaza Totsuka) opens.
1928	- Meguro-Kamata Railway Co., the predecessor of TOKYU CORPORATION, merges with Den-en Toshi Company.	1984	- Tokyu Loan & Guarantee Corporation is established. - Tokyu Home & Lifestyle Research Center is established (now Tokyu Fudosan R&D Center Inc.). - Palau Pacific Resort opens.	2011	- Abeno Market Park Q's MALL (now Q's Mall Abeno), one of the largest shopping malls in Osaka Prefecture, opens.
1953	- TOKYU CORPORATION spins off real estate division that becomes TOKYU LAND CORPORATION (TLC). - Real estate sales, gravel, recreational facility, and advertising business operations are transferred from TOKYU CORPORATION to TLC (Chairman: Keita Goto, President: Noboru Goto).	1985	- Tokyu Relocation Corporation is established (now Tokyu Stay Co., Ltd.).	2012	- Tokyu Plaza Omotesando Harajuku opens. - Activia Properties Inc. is listed on the Tokyo Stock Exchange. - PT. Tokyu Land Indonesia is established for the purpose of expanding business in Indonesia. - Established Tokyu Land US Corporation for the real estate development and lease management businesses in the United States.
1955	- Construction of Daikanyama Tokyu Apartment (Japan's first luxury rental apartment complex for foreign nationals) is completed.	1988	- Tokyu Harvest Club, members-only resort hotel, opens in Tateshina.	2013	- Comforia Residential REIT, Inc. is listed on the Tokyo Stock Exchange. - TLC, TOKYU COMMUNITY CORP. and TOKYU LIVABLE, INC. are delisted and Tokyu Fudosan Holdings Corporation is established and listed on the First Section of the Tokyo Stock Exchange.
1956	- TLC is listed on the Second Section of the Tokyo Stock Exchange (reassigned to the First Section of the TSE in 1961). - Shibuya sales office opens, making TLC's full-scale entry into the real estate intermediary business.	1993	- Former Tokyu Stay Kamata opens, making TLC's entry into the medium-to-long stay city hotel business.	2014	- Tokyu Harvest Club Kyoto Takagamine & VIALA, a members-only resort hotel, opens.
1959	- TOKYU CONSTRUCTION CO., LTD. is established. Construction business assets and trade rights are transferred from TLC to Tokyu Construction Co., Ltd.	1999	- Someino SC, large shopping center is securitized.	2015	- Tokyu Plaza Shibuya closes due to the redevelopment of Shibuya. - Q Plaza Harajuku opens. - Q's Mall Base Morinomiya opens. - Homecreer Yoga opens. - TLC headquarters moved to TK Minami-Aoyama Building.
1961	- TOKYU AGENCY, INC. is established. Assets and trade rights concerning advertising business are transferred from TLC to TOKYU AGENCY, INC. - TLC and Mitsubishi Bank team up to offer the "Tokyu-Mitsubishi Home Loan Program" (Japan's first loan program offered through a corporate partnership).	2000	- TLC establishes EWEL, Inc. a company specializing in the outsourced management of wellness and welfare benefits.	2016	- Market Square Kawasaki East opens.
1965	- Shibuya Tokyu Plaza (now Tokyu Plaza Shibuya) opens and becomes the new home of the TLC headquarters. - Tokyu Home Loan is launched (the industry's first seller's guarantee system is introduced).	2001	- Established Tokyu Real Estate Investment Management Co., Ltd., a real estate investment advisory company, as a joint venture with TOKYU CORPORATION (40% investment ratio at establishment) - Management of 11 existing resort facilities consolidated under Tokyu Resort Service Co., Ltd. - A portion of non-life insurance operations is transferred to newly-established TOKYU INSURANCE CONSULTING CO., LTD. a joint venture with other Tokyu Group Companies.	2017	- Established TLC REIT Management Inc. is founded associated with the organizational restructuring of the three asset management companies. - Construction of a large complex that combines condominiums "BRANZ" with senior housing facilities "Grancreeper". Opening of Setagaya Nakamachi Project, the first "LIFE STORY TOWN" development project. - Established Tokyu Re-design Corporation to integrate renovation businesses.
1966	- Tokyu Home, the custom-built wooden houses are commercialized.	2003	- TLC establishes E-LIFE DESIGN Inc., which manages and operates senior housing and a care-giving facility, with Mitsubishi Corporation (now TOKYU E-LIFE DESIGN Inc.). - Construction of Tokyu View Residence Ichigaya Kawadacho, luxury rental condominiums, is completed. - Tokyu Real Estate Investment Trust, Inc. is listed on the Tokyo Stock Exchange. - Minoh Market Park Visola (now Q's Mall Minoh) opens, one of the biggest shopping centers in the Kansai area.	2018	- Hyatt Regency Seragaki Island Okinawa opens. - Tokyu Small-amount Short-term Insurance Inc. is established.
1969	- Tokyu Home Service Co. (later Tokyu Amenix Corporation), a company specializing in after-sale services for homebuyers, is established.	2004	- Grancreeper Azamino, opens as the first of the senior housing series. - Grancare Azamino, a private pay care-giving facility, opens. - Private placement fund for office/housing-related properties is started.	2019	- Construction of SHIBUYA SOLASTA completed and TLC headquarters relocated. - Tokyu Plaza Shibuya opens.
1970	- TOKYU COMMUNITY CORP., a company specializing in building and condominium management, is established. - Osaka Branch Office (now Kansai Area Residential Business Division) opens.	2005	- Private placement fund for commercial-related properties is started.	2020	- Established Tokyu Resorts & Stays Co., Ltd. with the integration of affiliated companies in the hotel and resort business. - TOKYU PORTCITY TAKESHIBA opens.
1972	- TLC establishes Area Service Co. (now Tokyu Livable, Inc.), a company specializing in real estate referrals.	2007	- TLC establishes Tokyu Land Capital Management Inc., a real-estate investment management firm.	2021	- ReENE Co., Ltd. is established.
1973	- Tokyu Architects & Engineers, Inc. is established. Design supervision business, assets and trade rights are transferred from TLC to Tokyu Architects & Engineers, Inc. - TLC opens development offices in Sapporo (now the Sapporo Branch).	2008	- Tokyu Harvest Club VIALA Hakone Hisui opens as the first of the VIALA Series, an upgraded version of the Tokyu Harvest Club, an operation specializing in members-only resort hotels. - Tokyu Home Co. and Tokyu Amenix Corporation merge to form Tokyu Homes Corporation.	2023	- Forestgate Daikanyama opens. - COCONO SUSUKINO opens.
1975	- Oita Tokyu Golf Course (now Oita Tokyu Golf Club) opens, making TLC's entry into the golf business. - Ishikatsu Exterior, Inc., becomes a TLC affiliate.	2009	- TLC establishes TOKYU LAND SC MANAGEMENT CORPORATION, a commercial facility management firm. - TLC establishes TLC Realty Management Inc. (now TLC REIT Management Inc.), a company that conducts asset management for real estate investment trusts related to leased houses. - Creer Residence Sakuradai, a new residence in the senior residence series, opens. - TLC Group's Social and Environmental Report 2009 is issued.	2024	- Tokyu Plaza Harajuku "Harakado" opens. - Shibuya Sakura Stage opens. - Tokyu Harvest Club VIALA Hakone Koyu, a members-only resort hotel, opens.
1976	- TOKYU HANDS INC., a retailer of home improvement and do-it-yourself merchandise, is established. (First store opens in Fujisawa).			2025	- Yoyogi Park BE STAGE opens.
1978	- Tokyu Resort Corporation, a company specializing in the sale of vacation homes, is established.				
1982	- TLC establishes Tokyu Home Corporation (now Tokyu Homes Corporation), a company specializing in building design and construction subcontracting. - Tateshina Tokyu Ski Resort opens, making TLC's entry into the ski business.				

## List of Major Affiliates

As of April 1, 2026

ISHIKATSU EXTERIOR INC.	Design, construction and management in landscaping, civil engineering
TLC REIT Management Inc.	Asset management of three investment corporations
Tokyu Land Capital Management Inc.	Asset management of Comforia Residential REIT, Inc., mainly investing in rental residences
TOKYU LAND SC MANAGEMENT CORPORATION	Operation, management, planning, etc. of commercial facilities and complexes
Tokyu Resorts & Stays Co., Ltd.	Management of hotel and resort facilities
Tokyu Resort Corporation	Sales of resort facilities (villas, membership rights, etc.)
TOKYU E-LIFE DESIGN Inc.	Management and operation of senior houses and nursing facilities
Pacific Islands Development Corporation	Management and operation of "Palau Pacific Resort"
PT. Tokyu Land Indonesia	Real estate development, lot sales, leases, management and operations in Indonesia
Tokyu Land US Corporation	Real estate development, lot sales, leases, management and operations in the United States
TOKYU LAND CORPORATION (SHANGHAI) LTD.	Real estate consulting business in China
Tokyu Land Asia Pte. Ltd.	Real estate development, lot sales, leases, management and operations in Asia
Tokyu Small-amount Short-term Insurance Inc.	Small-amount short-term insurance business
ReENE Co., Ltd.	Management and operation of renewable energy power plants, and electricity sales

## TOKYU LAND CORPORATION Major Office Locations

### Headquarters

SHIBUYA SOLASTA, 1-21-1 Dogenzaka, Shibuya-ku, Tokyo 150-0043, Japan  
Tel: +81-3-6455-1121 / FAX: +81-3-6416-1867

### Residential Business Unit

#### Kansai Area Residential Business Division

10F Shinsaibashi Tokyu Building, 4-3, Minami Semba 4-chome, Chuo-ku, Osaka-shi, Osaka 542-0081, Japan  
Tel: +81-6-6243-0109 / Fax: +81-6-6243-3109

### Urban Business Unit

#### Urban Development Division Kansai Office Commercial Business Department, Planning & Development Division Kansai Office Development Department 2

7F Shinsaibashi Tokyu Building, 4-3, Minami Semba 4-chome, Chuo-ku, Osaka-shi, Osaka 542-0081, Japan  
Tel: +81-6-6243-0511 / Fax: +81-6-6243-0611

### Residential Business Unit

#### Tokyo Area Residential Business Division Development Department 1 Yokohama Branch

Business Airport Yokohama, 3F Yokohama Gate Tower, 1-2-5, Nishi-ku, Yokohama-shi, Kanagawa 220-0011, Japan  
Tel: +81-45-306-9302 / Fax: +81-45-306-9303

### Residential Business Unit

#### Tokyo Area Residential Business Division Sapporo Branch

11F Sapporo North Plaza, 2-2, Kita-Ichijo-Nishi 4-chome, Chuo-ku, Sapporo-shi, Hokkaido 060-0001, Japan  
Tel: +81-11-231-2791 / Fax: +81-11-251-1519

### Residential Business Unit

#### Kansai Area Residential Business Division, Product Planning Department, Kyushu Business Planning Group

2F Hakata Kangen Building, 3-30-23 Hakata Ekimae, Hakata-ku, Fukuoka-shi, Fukuoka 812-0011, Japan

